



# Our Curriculum Vision



# Curriculum Vision 2024

## Our Curriculum Vision

Park Community Primary School is a place where children are inspired to become independent learners in a positive learning environment, where everyone is valued, where equality and diversity are celebrated and where inclusion is embraced. Our curriculum is designed to stimulate minds, developing a lifelong love of learning. We aim to inspire ambitious, independent, creative, sociable and inquisitive learners who are engaged in achieving their aspirations and dreams. Our curriculum is exciting, challenging and varied, developing a sense of awe and wonder in an ever changing world.

When consulting with children, parents, staff, governors and the wider community it was determined that our curriculum will be:

- Inclusive
- Inspiring
- Creative
- Flexible
- Encouraging
- Nurturing
- Diverse
- Engaging
- Fun
- Rewarding

Children will be encouraged to support each other, be resilient and confident when facing challenges and show determination to achieve their goals.



## Outdoor Learning

*“The best classroom and richest cupboard is roofed only by the sky”*

*(M. McMillian)*



Our curriculum will provide plentiful opportunities for outdoor learning, including Forest School sessions and working within the local community. These experiences will broaden the children’s skills, help to embed the four purposes outside of the classroom walls and encourage a healthy lifestyle. Teachers make the most of our extensive grounds which provide a wealth of opportunity for the children to explore and develop across a wide range of areas of learning. We have a full time, qualified Forest School Leader on site to ensure the children have the best possible experiences and develop a love of the great outdoors.

## Independent Learning

A prominent feature within our curriculum is allowing all children their “Time to Shine.” We provide opportunities throughout the day for independent and peer to peer learning in well-resourced and carefully planned areas of continuous provision.



## Wales & the Welsh Language

Throughout our curriculum opportunities are included for all children to develop their fluency in the Welsh language and further develop their knowledge and understanding of Welsh heritage and culture. We achieved the Cymraeg Campus Bronze Award in 2023 and Welsh plays a prominent role in our school.



## The Four Purposes

Our curriculum is designed to embrace and embed the four purposes across all areas of learning. We will provide learning experiences of the highest quality which motivate and excite children in the classroom and beyond.

### Ambitious, capable learners who:

- set themselves high standards and seek and enjoy challenge
- are building up a body of knowledge and have the skills to connect and apply that knowledge in different contexts
- are questioning and enjoy solving problems
- can communicate effectively in different forms and settings, using both Welsh and English
- can explain the ideas and concepts they are learning about
- can use number effectively in different contexts
- understand how to interpret data and apply mathematical concepts
- use digital technologies creatively to communicate, find and analyse information
- undertake research and evaluate critically what they find

and are ready to learn throughout their lives

### Enterprising, creative contributors who:

- connect and apply their knowledge and skills to create ideas and products
- think creatively to reframe and solve problems
- identify and grasp opportunities
- take measured risks
- lead and play different roles in teams effectively and responsibly
- express ideas and emotions through different media
- give of their energy and skills so that other people will benefit

and are ready to play a full part in life and work

### Ethical, informed citizens who:

- find, evaluate and use evidence in forming views
- engage with contemporary issues based upon their knowledge and values
- understand and exercise their human and democratic responsibilities and rights
- understand and consider the impact of their actions when making choices and acting
- are knowledgeable about their culture, community, society and the world, now and in the past
- respect the needs and rights of others, as a member of a diverse society
- show their commitment to the sustainability of the planet

and are ready to be citizens of Wales and the world

### Healthy, confident individuals who:

- have secure values and are establishing their spiritual and ethical beliefs
- are building their mental and emotional well-being by developing confidence, resilience and empathy
- apply knowledge about the impact of diet and exercise on physical and mental health in their daily lives
- know how to find the information and support to keep safe and well
- take part in physical activity
- take measured decisions about lifestyle and manage risk
- have the confidence to participate in performance
- form positive relationships based upon trust and mutual respect
- face and overcome challenge
- have the skills and knowledge to manage everyday life as independently as they can

and are ready to lead fulfilling lives as valued members of society

## Our Uniqueness

Park C.P. is located in the heart of the village of Llay, near Wrexham. Formerly a mining village, Llay has a strong community focus, with the Royal British Legion and Church



playing prominent roles locally. We are fortunate to have the beautiful Alyn Waters Country Park on our doorstep and within the village there are well established football and cricket clubs. Our curriculum aims to take advantage of the wealth of experiences and opportunities offered locally, whilst also helping our children to realise that the wider world is full of possibilities of which they should take advantage.

## Our Curriculum Pledges

Each year, our curriculum will include:

- **Whole School & Community Projects**
- **Fundraising Events**
- **Celebrations of local and national festivals and events**
- **Pupil Voice**
- **Well-Being Awareness**

### CELEBRATIONS

Careful planning will ensure that our curriculum includes opportunities throughout the year for our children to be involved in special celebrations, festivals and events (including local, national and international occasions). Such events will ensure the children embrace diversity and experience different religions and cultures, gaining a true passion for inclusivity.



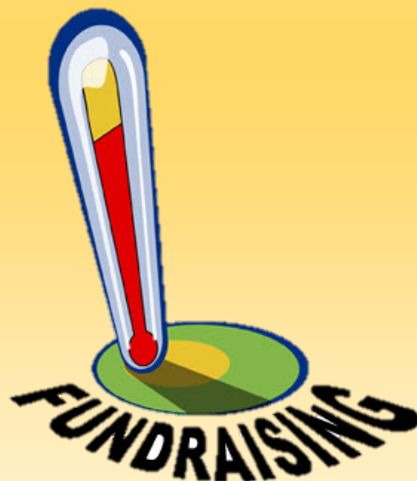
## WHOLE SCHOOL & COMMUNITY PROJECTS

It is vitally important that our children know and understand the community spirit and camaraderie that exists in the village of Llay. Projects to develop their knowledge of local heritage and broaden their understanding of the support and activities available locally will help to promote a sense of pride & respect in the village and beyond. This aspect of close community working and developing partnerships with local groups such as the Church and Royal British Legion will feature prominently in our curriculum.



## FUNDRAISING EVENTS

Each year, in discussion with children, parents and the community, we will select a charity (local or national) to raise awareness of and funds for. Fundraising gives children a sense of empowerment, helps to develop their moral understanding and allows them the opportunity to bring about positive change for the greater good. Demonstrating to the children the benefits of being generous with their time and personal effects is also an important value that we want the children of Park C.P. to carry with them throughout their lives.



## WELL-BEING AWARENESS

The happiness and well-being of all children is our priority & every child has access to a wealth of well-being experiences or interventions if required. Examples include Yoga, Mindfulness Sessions, Forest School, ELSA & 'Time to Shine' amongst others. The Five Ways to Well-Being play a prominent role within our curriculum and a Growth Mindset is promoted to all.



## PUPIL VOICE

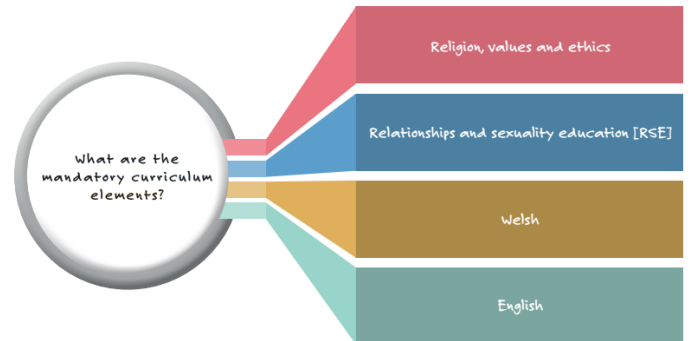
Empowering children and allowing a strong Pupil Voice is crucial to our success. Children here are listened to and their opinions valued. The views of the children are given consideration when determining themes, deciding classes and their interests and observations influence our School Improvement Plans.



## Areas of Learning Experiences

Our Curriculum consists of six Areas of Learning Experiences:

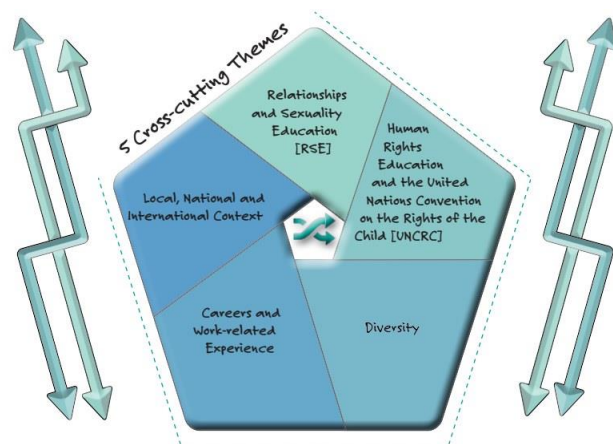
- Languages, Literacy & Communication (*including Welsh and British Sign Language*)
- Mathematics & Numeracy
- Science & Technology
- Humanities
- Expressive Arts
- Health & Well-Being



In addition our curriculum areas are enhanced by the Literacy & Numeracy Framework & the Digital Competency Framework. Carefully planned cross-curricular opportunities exist within our curriculum to ensure our children develop their skills and then utilise them effectively across a range of opportunities.

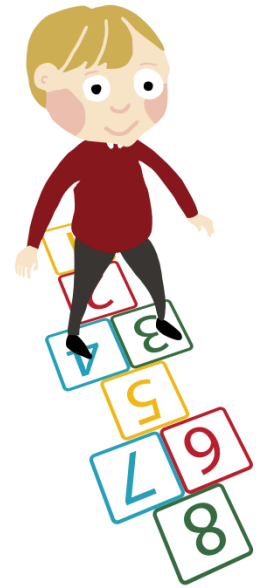
Whilst designing our curriculum we have also considered the following elements to ensure the children at Park C.P. truly become ambitious, informed, capable citizens of Wales and the wider world:

- Careers & work related experiences
- Well-being of Future Generations (Wales) Act 2015
- United Nations Convention on the Rights of the Child (UNCRC)
- United Nations Convention on the Rights of Persons with Disabilities (UNCRPD)
- Additional Learning Needs and Education Tribunal (Wales) Act 2018





## Our Values



At Park C.P. every individual is valued for who they are and our differences are celebrated. We aim to ensure that our children hold strong values, allowing them to be ambitious, capable learners who embrace the world around them, welcoming challenge and striving to be passionate, resilient citizens of Wales and the world.

### Our Values:

- **Believe in yourself** - *have a positive outlook and understand that you can and will be able to reach your goals! Not everyone progresses at the same pace and that's OK!*
- **Have respect for yourself and others** - *treat others as you expect them to treat you. Be respectful and considerate of everyone.*
- **Take ownership for your actions** - *it's OK to make mistakes, but we must take responsibility for them and learn from them.*
- **Challenge yourself** - *be determined and remember it's OK to say "I can't do it YET " just don't give up*
- **Aspire to achieve your dreams** - *aim high and reach for the stars, sometimes you'll get there and other times you won't but that's OK! The world is full of opportunities, use these to your advantage.*
- **Be kind to yourself and others** - *look after your body and your mind, show kindness and encourage others to find their gifts.*



## Delivering Our Curriculum

At Park C.P. we use a wide range of methods to deliver our exciting and engaging curriculum, giving the children a wealth of learning experiences. Our days usually start in the mastery of languages and mathematics using programmes such as Read, Write, Inc., Literacy and Language and Inspire Maths. Following this, children explore our termly themes covering all areas of learning experiences. Our themes are chosen by the children, question based and focus on a concept with an RVE link. Discussions in each class determine which path of learning the children will follow and 'cold tasks' are undertaken which then impact on teacher's planning. For the year 2023 to 2024 our themes are:

- Famous People - Just because we can, does it mean we should??? - Values and Ethics
- Cynefin - Who do we belong to? - Identity & Belonging
- The Olympics - class based questions - Relationships & Responsibility

In addition, all children are given "Time to Shine" - opportunities to develop their own skills with independent choice through carefully planned areas of continuous provision.

Our curriculum, for the most part uses the **multi-disciplinary approach**, whereby the same theme is studied from the viewpoint of more than one area of learning. This allows our children to connect the learning more effectively and supports the development of transferable skills. Using this approach, our children gain a more holistic understanding of the world.





## Progression

The Curriculum for Wales 2022, offers children the opportunity to progress at a pace suited to their individual needs - a principal we firmly believe here at Park C.P.. Each child is on his/her own journey to success and we endeavour to ensure that the needs of every learner are met.

Assessment is undertaken regularly, in a variety of ways and this information is used carefully to inform planning. We use the Taith 360 system to assess, track and evaluate progress allowing us to support every child on their journey.

Children are encouraged to be actively involved in their progression journey, recognising how they can improve and celebrating their successes. Progression Steps are included in our curriculum, however, unlike in previous years, there is no expectation for a child to have completed a step by a certain age.



## Principles of Progression

- Increasing breadth and depth of knowledge
- Deepening understanding of the ideas and disciplines within the Areas
- Refinement and growing sophistication in the use and application of skills
- Making connections and transferring learning into new contexts
- Increasing effectiveness

Progression supported by descriptions of learning which provide guidance on how learners should progress within each statement of what matters

- ✓ Arranged in 5 progression steps to guide pace
- ✓ Framed from learner's perspective
- ✓ Framed broadly to sustain learning over a series of years
- ✓ Broadly set against ages of 5, 8, 11, 14 and 16
- ✗ Stand-alone tasks or activities
- ✗ Assessment criteria

